



Chiswick 27 | Contemporary Facade

Facade images and landscaping may vary from this image

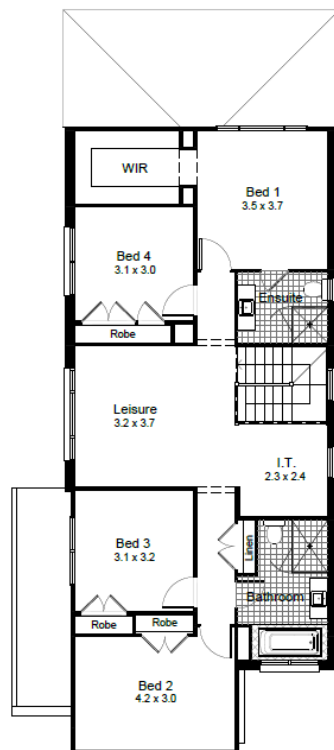
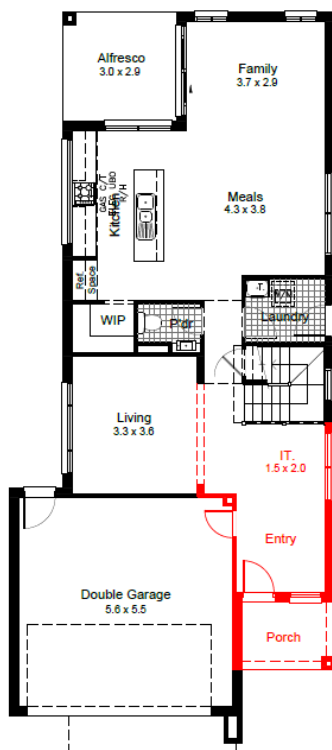
4 | 2.5 | 2

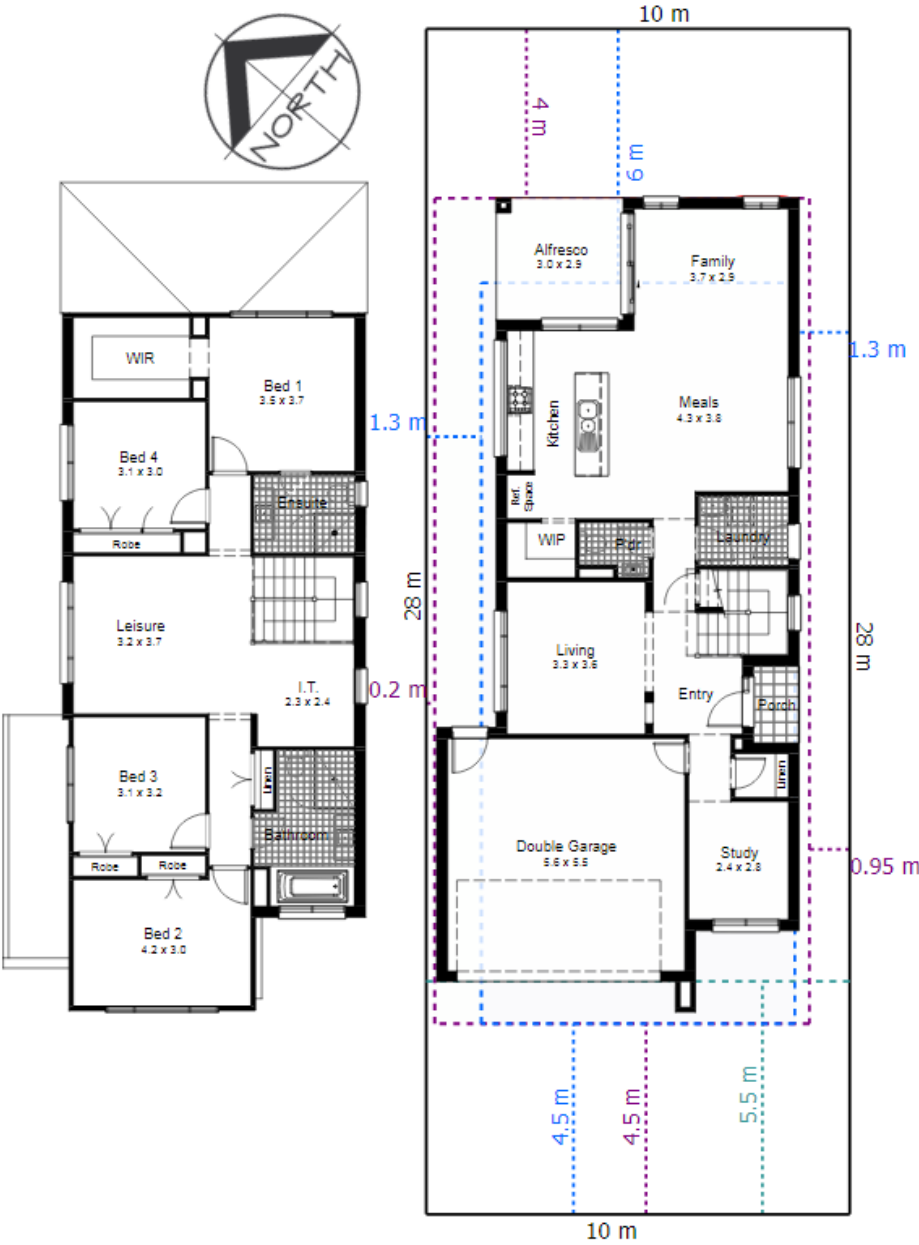
**Lot 142 \$1,202,000**

Includes Sapphire Inclusions and  
Current Promotional offer

## PACKAGE INCLUDES

- Land Size - 280 SQM
- Driveways, Landscaping, Fencing
- Floor Coverings
- Fully Ducted Air
- 2750mm Ceiling Height to Ground Floor – subject to approval
- Smeg Appliances
- Colour Trims to Façade
- 40mm Stone Benchtops to Kitchen
- Two 600 Wide Ovens
- Auto Garage Door
- Alarm System
- \$30,000 Discount Already Applied
- & Much More...





Road No.02

House Length	19.50m	Total Area m <sup>2</sup>	248.91
House Width	8.55m	Total Area Squares	27