



Rosebery 28 | Hamptons Facade

Facade images and landscaping may vary from this image

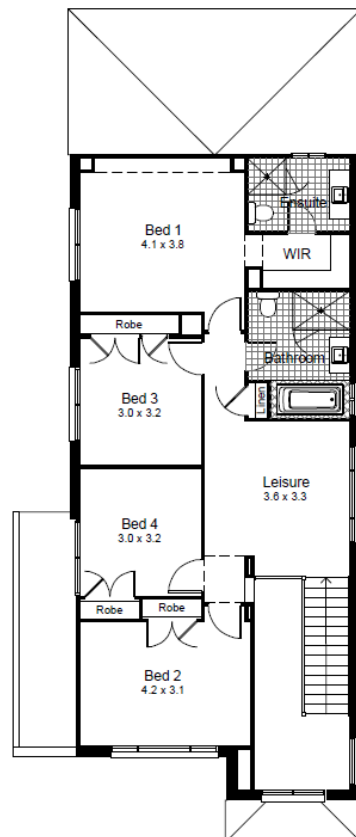
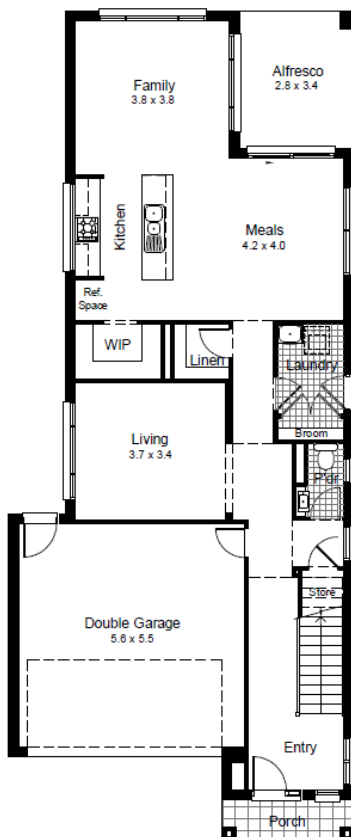
4 | 2.5 | 2

**Lot 143 \$1,299,800**

Includes Sapphire Inclusions and  
Current Promotional offer

## PACKAGE INCLUDES

- Land Size – 308 SQM
- Driveways, Landscaping, Fencing
- Floor Coverings
- Fully Ducted Air
- 2750mm Ceiling Height to Ground Floor – subject to approval
- Smeg Appliances
- Colour Trims to Façade
- 40mm Stone Benchtops to Kitchen
- Two 600 Wide Ovens
- Auto Garage Door
- Alarm System
- \$30,000 Discount Already Applied
- & Much More...



This design may require a step down in the home

**ClarendonHomes**



Road NO.02

House Length	20.50m	Total Area m <sup>2</sup>	255.74
House Width	8.55m	Total Area Squares	28