



Vienna 15 | Manila Facade

Facade images and landscaping may vary from this image

4 | 1 | 2 | 1

Lot 207 \$1,092,000

Land Registration 3rd Quarter 2023

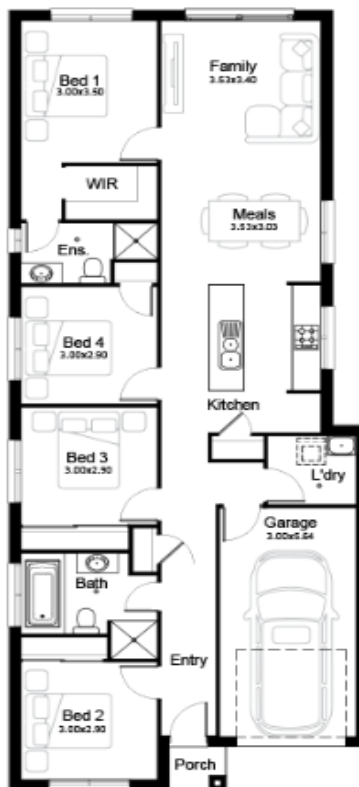
Current Promotional Discount included.

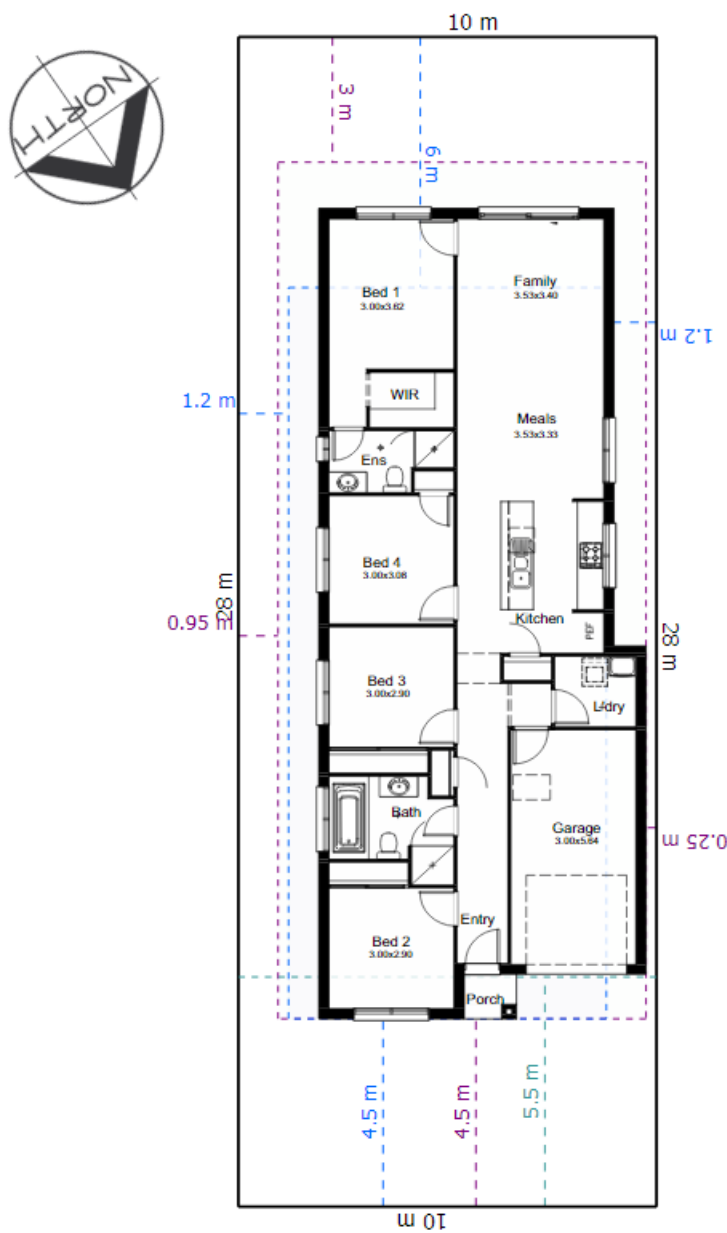
Land Size 280 SQM

This plan may include additional steps, please see a consultant.

PACKAGE INCLUDES

- Quality Tiles & Carpet
- Blinds and Flyscreens to windows
- Insulation to walls and ceiling (excluding garage)
- 900mm Stainless Steel Oven, Cook top and Range hood. Stainless Steel Dishwasher
- 20mm stone bench top to kitchen with Soft close drawers and doors.
- Automatic Garage Doors
- Ducted Air Included
- Solar Bonus
- Driveway, Turf, Letterbox, Site Costs & Fencing
- 10% Off house price already included





Road No.03

House Length	19.49m	Total Area m ²	142
House Width	7.87m	Total Area Squares	15