



Phoenix 31 | Seattle Facade

Facade images and landscaping may vary from this image

4 | 1 | 3 | 2

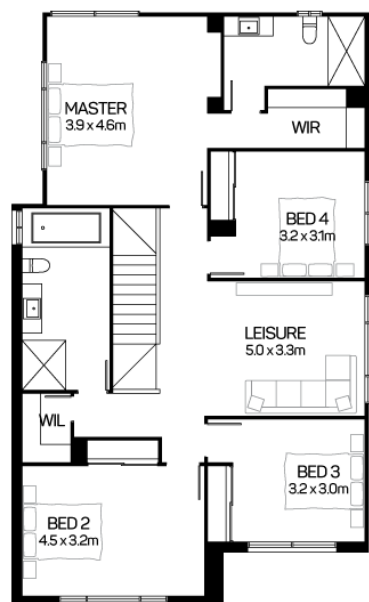
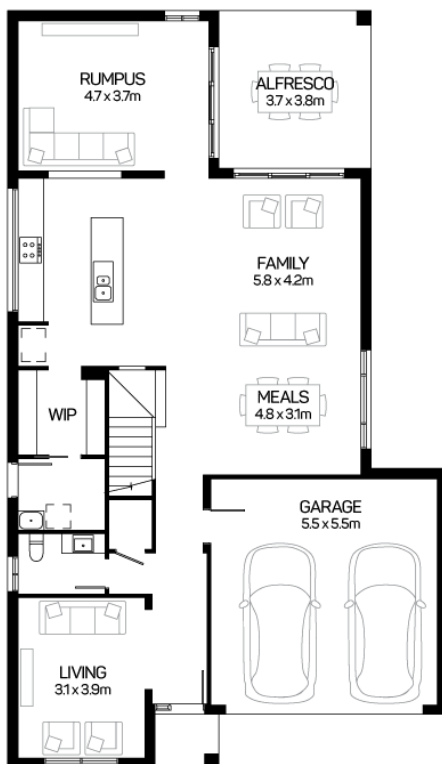
Lot 254 \$1,459,000
Land Registration 2nd Quarter 2023

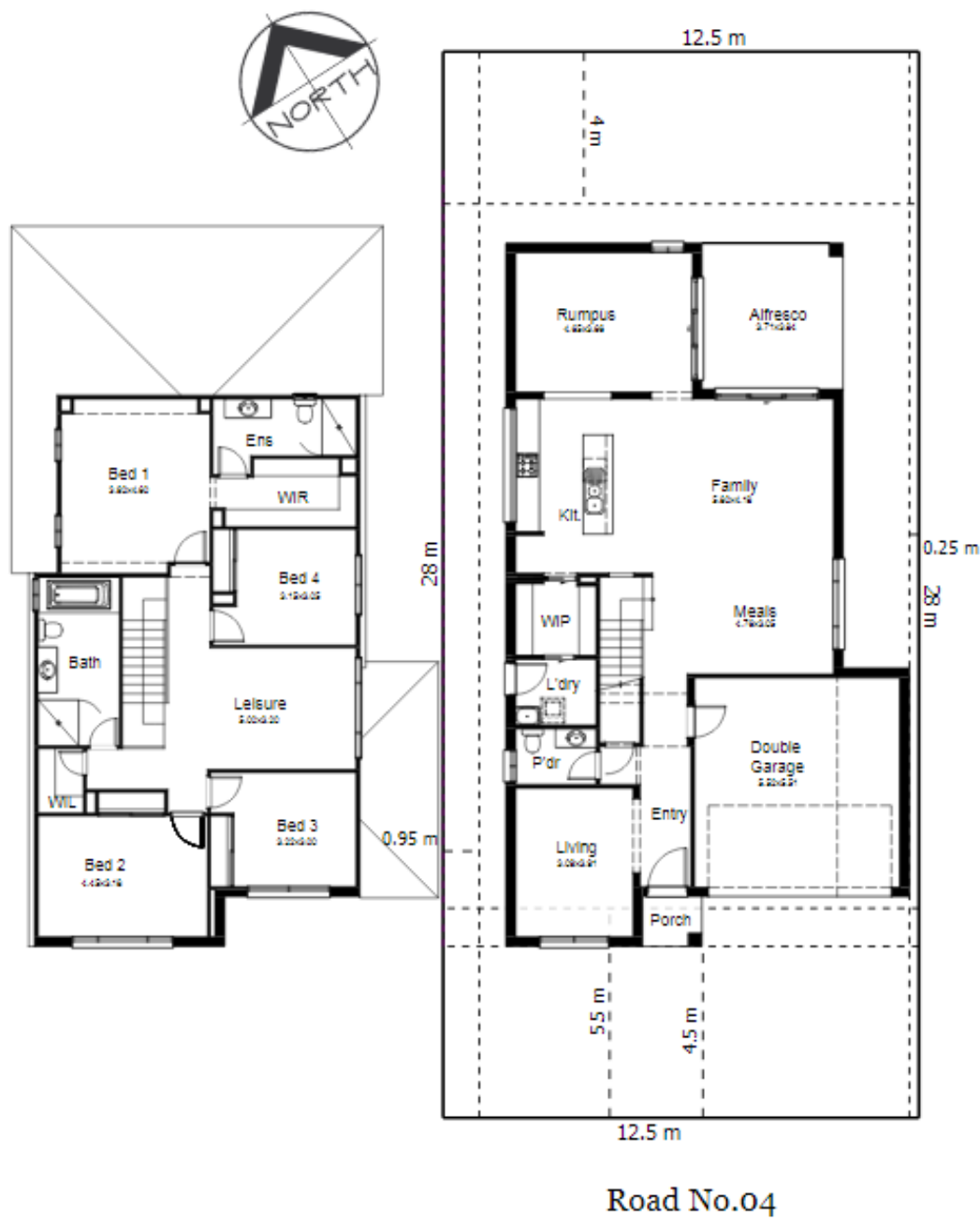
Comfort, Kitchen and Electrical Packs Included. **Current Promotion included.** Land Size 350 SQM

This plan may include additional steps, please see a consultant.

PACKAGE INCLUDES

- Quality Tiles & Carpet
- Blinds and Flyscreens to windows
- Insulation to walls and ceiling (excluding garage)
- 900mm Stainless Steel Oven, Cook top and Range hood. Stainless Steel Dishwasher
- 20mm stone bench top to kitchen with Soft close drawers and doors.
- Down lights to living Areas
- Automatic Garage Doors
- TV Antenna
- Driveway, Landscaping, Site Costs & Fencing
- 10% Off House and Land Already Applied
- Solar Bonus Included





House Length	18.47m	Total Area m ²	288.64
House Width	10.60m	Total Area Squares	31