



**Turn-Key Packages**

Geneva 17N | Seabreeze Facade

Facade images and landscaping may vary from this image

3 | 1 | 2 | 1

**Lot 252 \$1,099,000**

Land Registration 3<sup>rd</sup> Quarter 2023

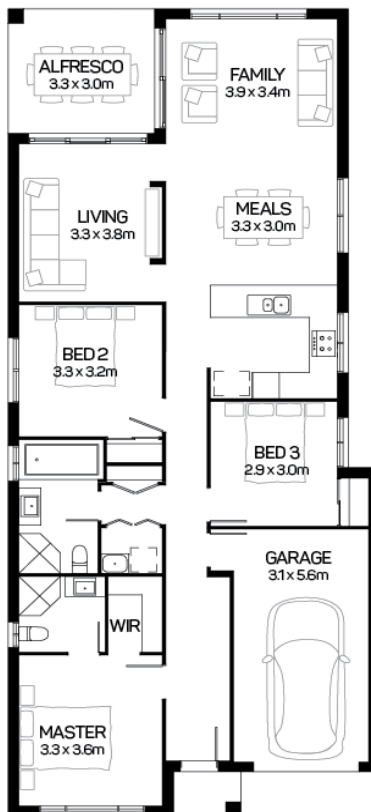
**Current Promotion included.**

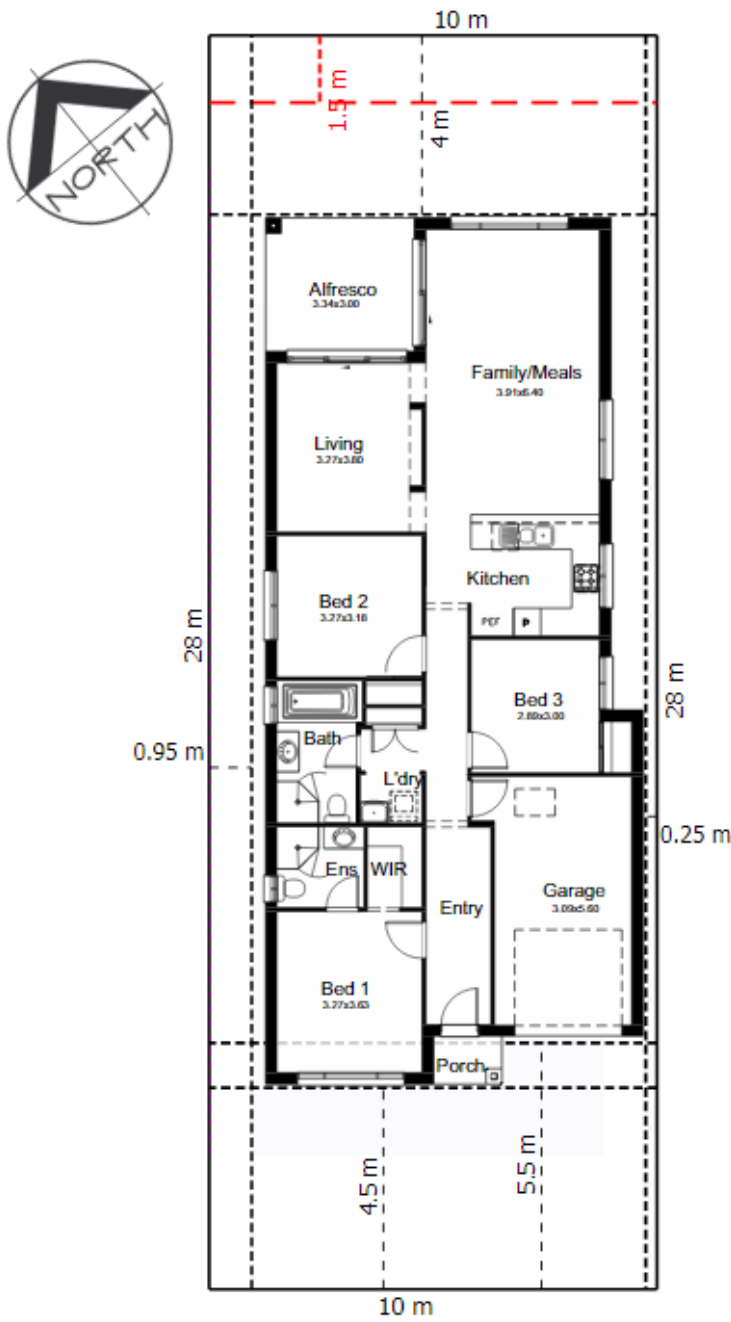
Land Size 280 SQM

This plan may include additional steps, please see a consultant.

## PACKAGE INCLUDES

- Quality Tiles & Carpet
- Blinds and Flyscreens to windows
- Insulation to walls and ceiling (excluding garage)
- 900mm Stainless Steel Oven, Cook top and Range hood. Stainless Steel Dishwasher
- 20mm stone bench top to kitchen with Soft close drawers and doors.
- Automatic Garage Doors
- Ducted Air Included
- \$30,000 Off Already Applied
- Driveway, Landscaping, Site Costs & Fencing





Road No.04

House Length	19.43m	Total Area m <sup>2</sup>	153.20
House Width	8.47m	Total Area Squares	17