



# FAIRWOOD RISE

ROUSE HILL



**SAVE**  
Up to  
**\$70k**

\*T&Cs apply

HAYMAN 32 | ELOUERA FACADE

**Lot 145 \$1,486,000**

4 2.5 2 408m<sup>2</sup>

## LAND REGISTERED

### Package includes:

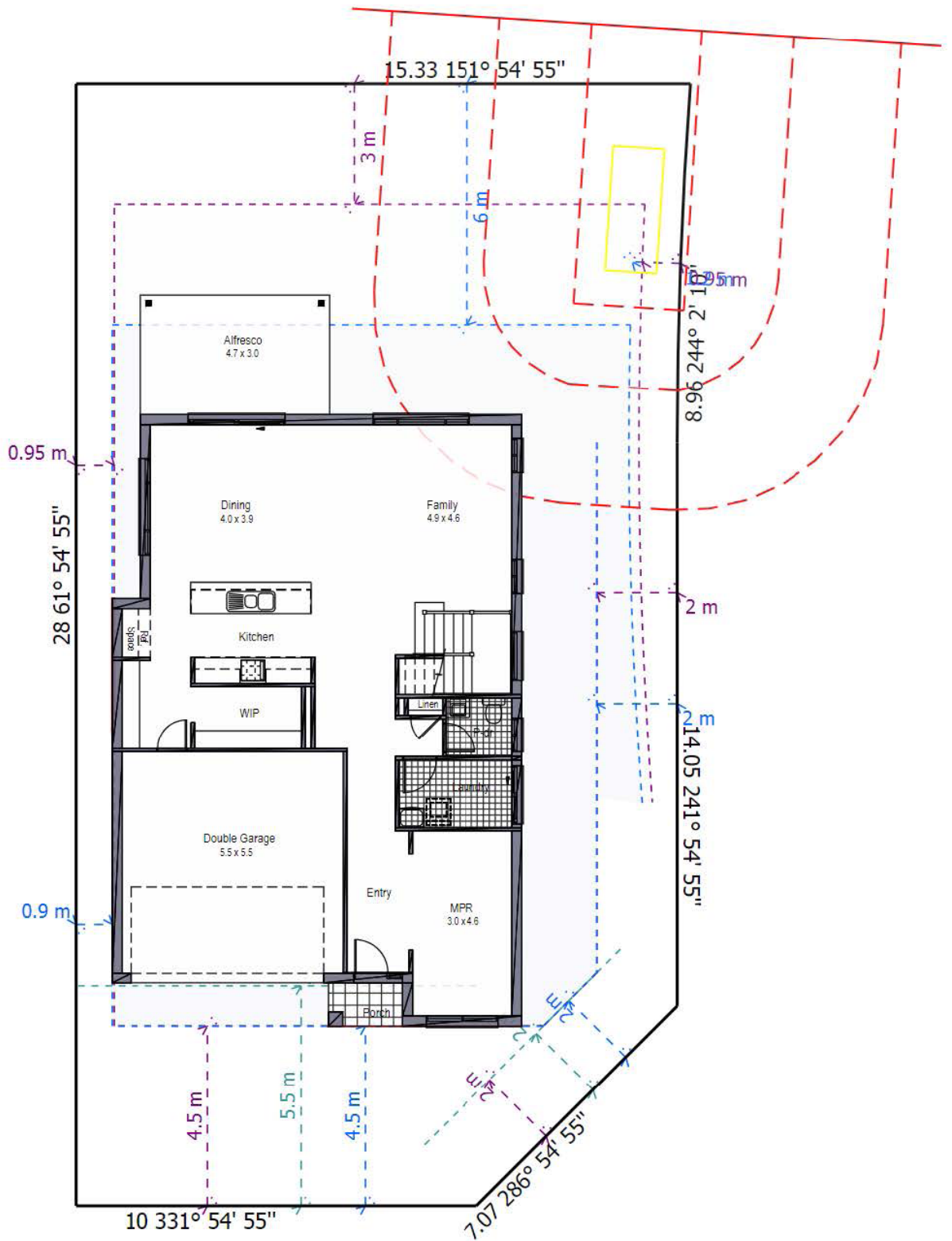
- Quality Tiles Carpet
- Blinds and Flyscreens to windows
- Insulation to walls and ceiling (excluding garage)
- 900mm Stainless Steel Oven, Cook top and Range hood. Stainless Steel Dishwasher
- 20mm stone bench top to kitchen with Soft close drawers and doors.
- Automatic Garage Doors
- Ducted Air Included
- Solar Bonus
- Driveway, Turf, Letterbox , Site Costs Fencing



**CPG ESTATES**

**ClarendonHomes**

Terms and conditions apply contact us for more information. Images for illustrative purposes only. Land value included in the package. E&OE. Clarendon Homes reserves the right to change the price without notice. Clarendon Homes (NSW) Pty Ltd. ABN 18 003 892 706 BL No. 2298C. Prices based on July 2024 Price List.



## Hayman 32 408m<sup>2</sup> Lot

House Length	18.20m	Total Area m <sup>2</sup>	294
House Width	10.20m	Total Area Squares	32

CPG ESTATES

ClarendonHomes

Terms and conditions apply contact us for more information. Images for illustrative purposes only. Land value included in the package. E&OE. Clarendon Homes reserves the right to change the price without notice. Clarendon Homes (NSW) Pty Ltd. ABN 18 003 892 706 BL No. 2298C. Prices based on July 2024 Price List.