



FAIRWOOD RISE

ROUSE HILL



**TURN
KEY
PACKAGE**

*T&Cs apply

BOSTON 35 | ELOUERA FACADE

Lot 236 \$1,665,000

🛏️ 5 🚿 2.5 🚗 2 487m²

LAND REGISTERED

Package includes:

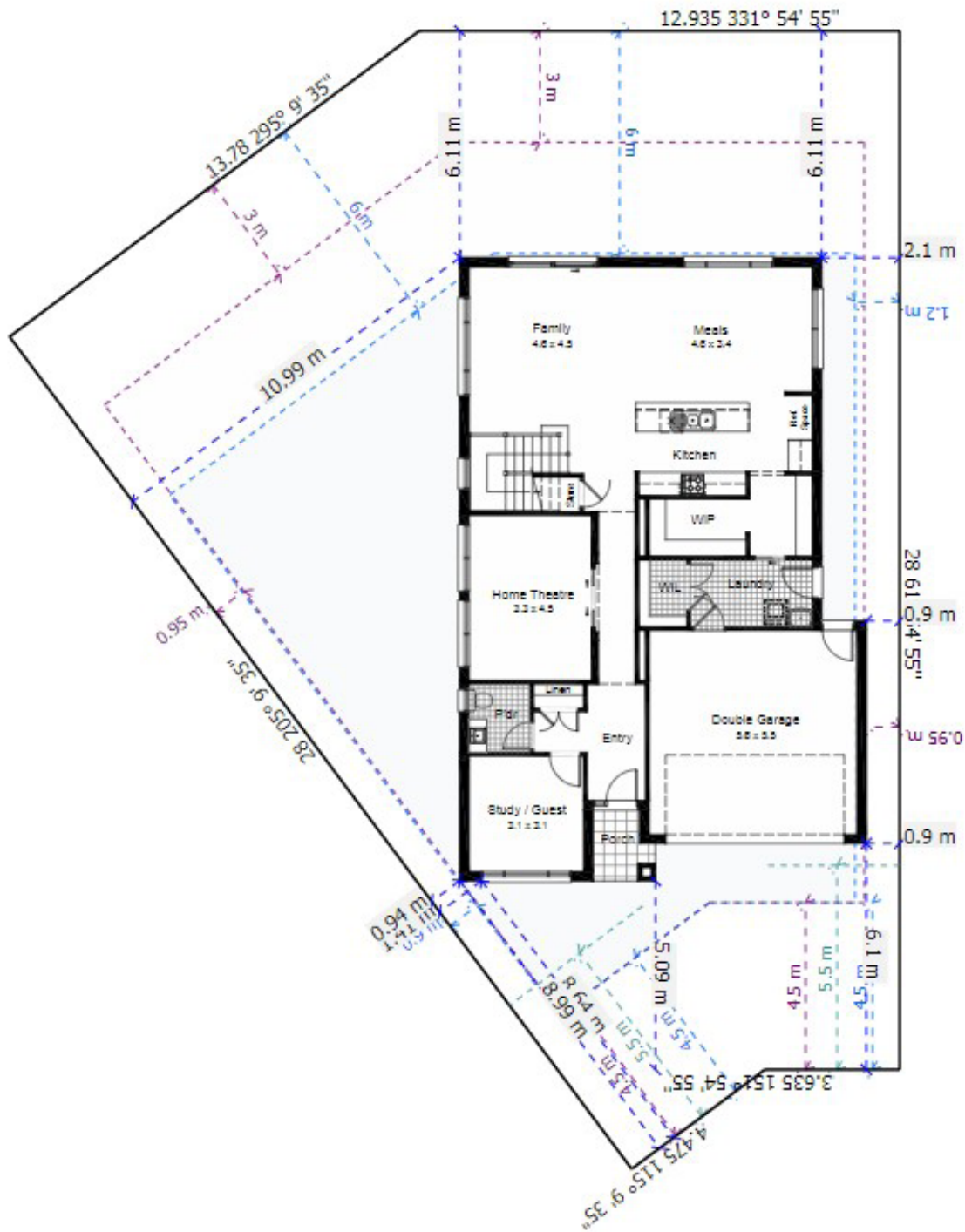
- Quality Tiles Carpet
- Blinds and Flyscreens to windows
- Insulation to walls and ceiling (excluding garage)
- 900mm Stainless Steel Oven, Cook top and Range hood. Stainless Steel Dishwasher
- 40mm stone bench top to kitchen with Soft close drawers and doors.
- Automatic Garage Doors
- Ducted Air Included
- Solar Bonus
- Driveway, Turf, Letterbox , Site Costs Fencing
- *Current promotional discount already applied



CPG ESTATES

ClarendonHomes

Terms and conditions apply contact us for more information. Images for illustrative purposes only. Land value included in the package. E&OE. Clarendon Homes reserves the right to change the price without notice. Clarendon Homes (NSW) Pty Ltd. ABN 18 003 892 706 BL No. 2298C. Prices based on April 2024 Price List.



Boston 35 487m² Lot

House Length	16.80m	Total Area m ²	309
House Width	11.00m	Total Area Squares	35