



FAIRWOOD RISE

ROUSE HILL



**TURN
KEY
PACKAGE**

*T&Cs apply

WATERFORD 27 | SAVILLE FACADE

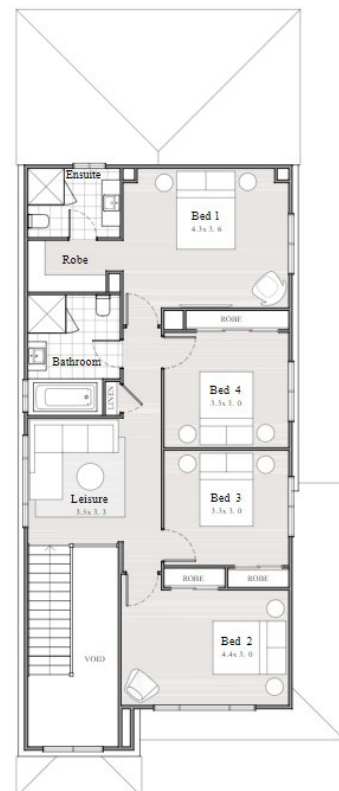
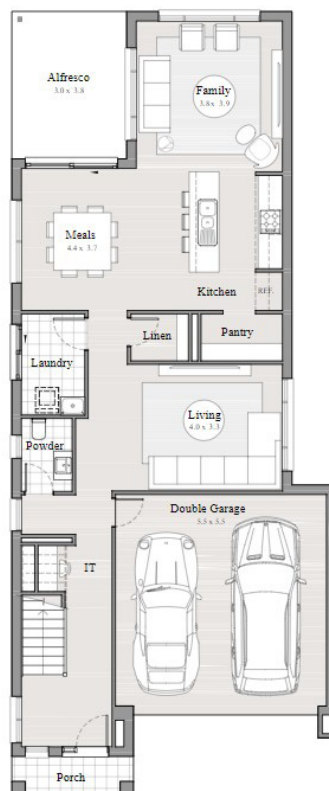
Lot 151 \$1,318,000

4 **2.5** **2** **320m²**

LAND REGISTERED

Package includes:

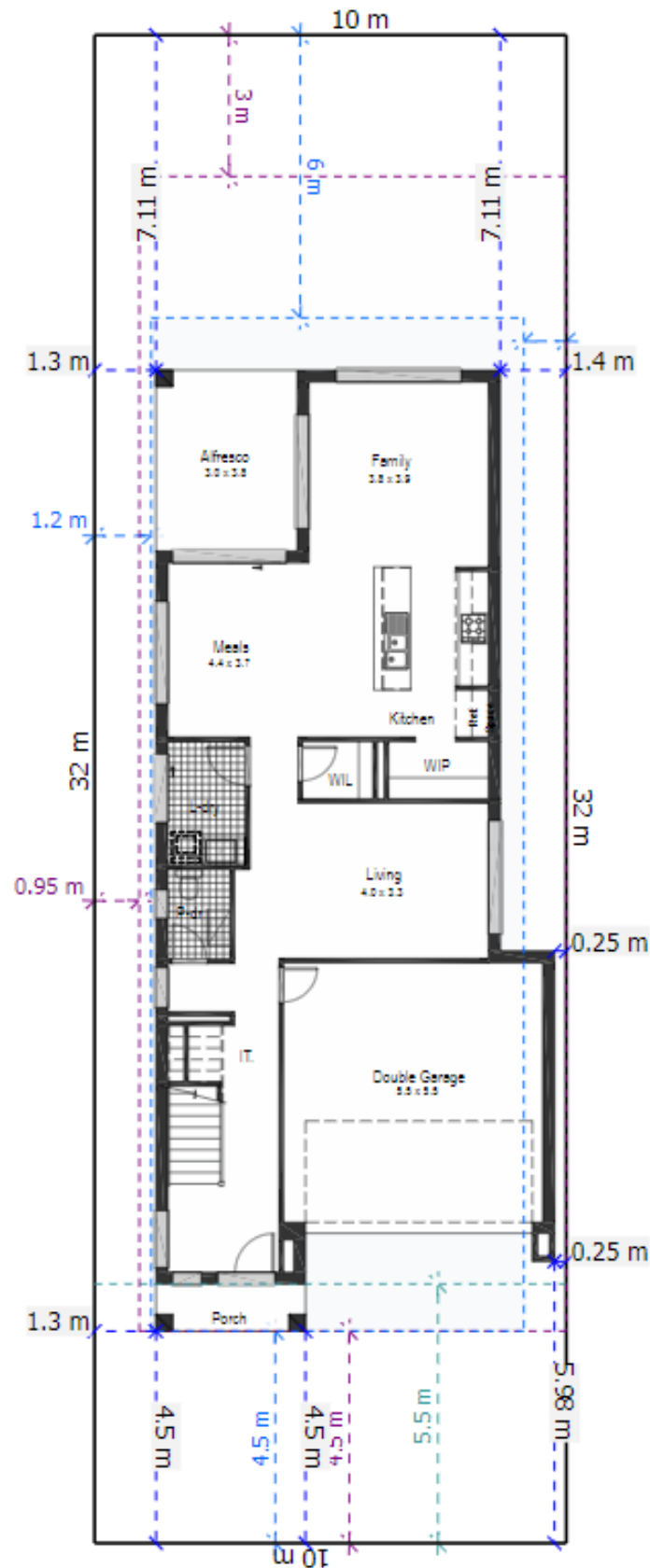
- Quality Tiles Carpet
- Blinds and Flyscreens to windows
- Insulation to walls and ceiling (excluding garage)
- 900mm Stainless Steel Oven, Cook top and Range hood. Stainless Steel Dishwasher
- 20mm stone bench top to kitchen with Soft close drawers and doors.
- Automatic Garage Doors
- Ducted Air Included
- Solar Bonus
- Driveway, Turf, Letterbox , Site Costs Fencing
- *Current promotional discount already applied



CPG ESTATES

ClarendonHomes

Terms and conditions apply contact us for more information. Images for illustrative purposes only. Land value included in the package. E&OE. Clarendon Homes reserves the right to change the price without notice. Clarendon Homes (NSW) Pty Ltd. ABN 18 003 892 706 BL No. 2298C. Prices based on April 2024 Price List.



Waterford 27 320m² Lot

| | | | |
|--------------|--------|---------------------------|-----|
| House Length | 20.40m | Total Area m ² | 249 |
| House Width | 8.50m | Total Area Squares | 27 |