



FAIRWOOD RISE

ROUSE HILL



**TURN
KEY
PACKAGE**

*T&Cs apply

TREVI 26 | SEATTLE FACADE

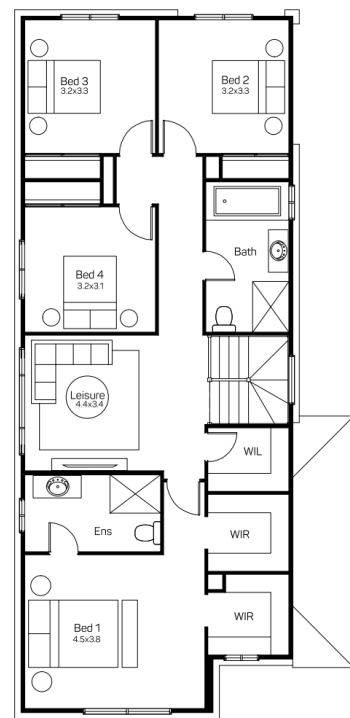
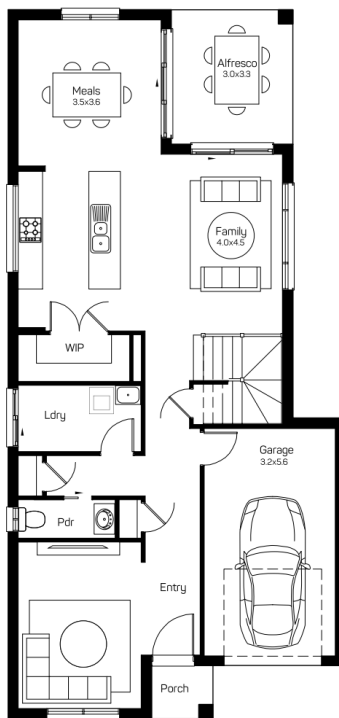
Lot 303 \$1,199,000

🛏️ 4 🚿 2.5 🚗 1 295m²

LAND REGISTRATION - LATE 2025

Package includes:

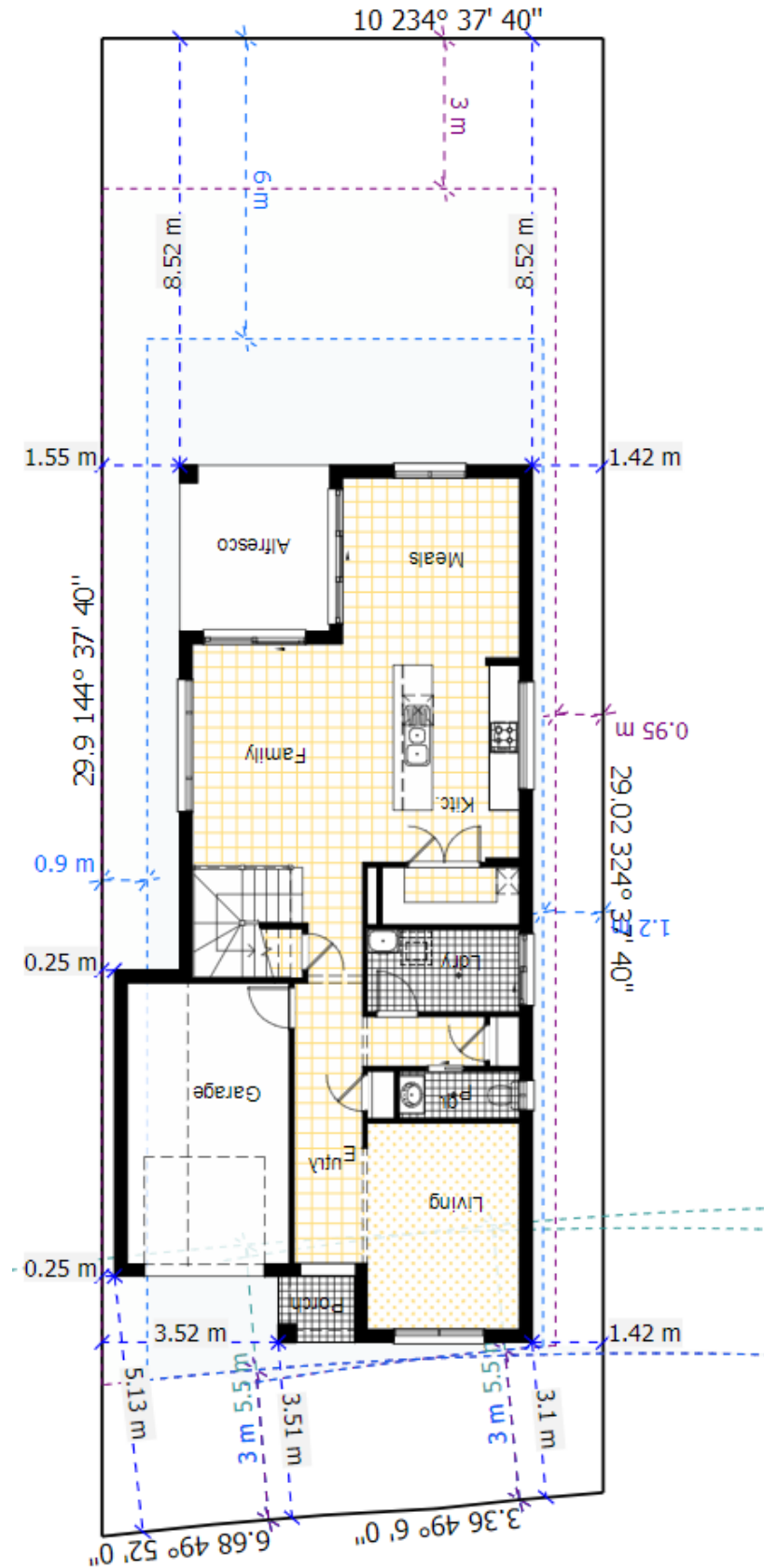
- Quality Tiles Carpet
- Blinds and Flyscreens to windows
- Insulation to walls and ceiling (excluding garage)
- 900mm Stainless Steel Oven, Cook top and Range hood. Stainless Steel Dishwasher
- 20mm stone bench top to kitchen with Soft close drawers and doors.
- Automatic Garage Doors
- Ducted Air Included
- Solar Bonus
- Driveway, Turf, Letterbox , Site Costs Fencing
- *Current promotional discount already applied



CPG ESTATES

Domaine homes

Terms and conditions apply contact us for more information. Images for illustrative purposes only. Land value included in the package. E&OE. Domaine Homes reserves the right to change the price without notice. Domaine Homes (NSW) Pty Ltd. ABN 19 080 788 969 BL No. 91387C. Prices based on July 2024 Price List.



Trevi 26 295m² Lot

House Length	17.50m	Total Area m ²	241
House Width	8.30m	Total Area Squares	26