

St ANDREWS



7% LEASEBACK OPPORTUNITY

VillaRange Display Home
\$510,000



HOUSE AREA 94.01m²
LAND AREA 208m²

Contour home design - Lot 216
includes:

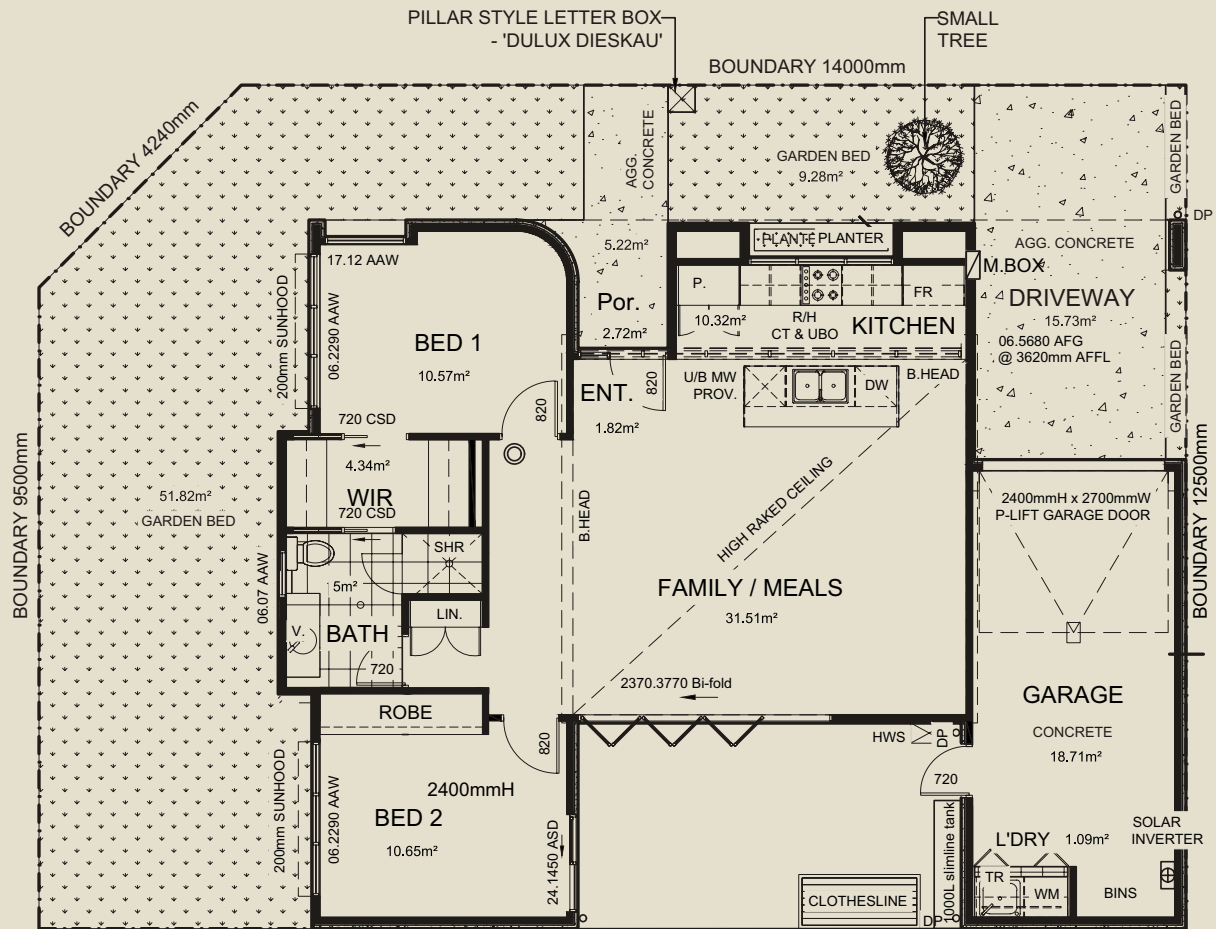
- up to 3 years, 7% leaseback opportunity on the package price on our Display Home.
- Architecturally designed by Studio Nine Architects.
- Located in our future display village featuring our trusted builder partners.
- Nearby linear reserve and Central park.
- Titled and ready to build.
- You can walk the block.

Proudly marketed by
OLIVER UME

Sales & Information Centre
Open 7 days 11 - 5pm
1 St Andrews Way,
Andrews Farm SA 5114
livestandrews.com.au

villawood
properties

St ANDREWS



Features of the Contour home design

- Open plan kitchen and living space with 3.6m high ceilings.
- Ample natural light and ventilation through high storey window and openable windows throughout.
- Single car garage with additional on-site car park space.
- 6-Star sustainability rating.

*Please note that the floorplan and area size are approximate and vary slightly per specific allotment.

** Please note imagery is the artist impression only.

Proudly marketed by

●LIVER ■UME

Sales & Information Centre

Open 7 days 11 - 5pm

1 St Andrews Way,

Andrews Farm SA 5114

livistandrews.com.au

villawood
properties