

HARKNESS PLACE

OAKVILLE



TURN
KEY
PACKAGE

*T&Cs apply

GENEVA 14 | GRACE FACADE

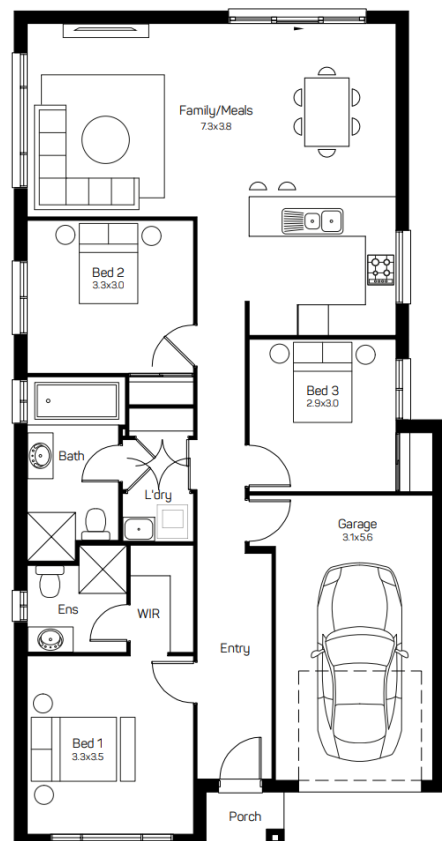
Lot 409 \$1,026,000

3 2 1 353m²

LAND REGISTERED

Package includes:

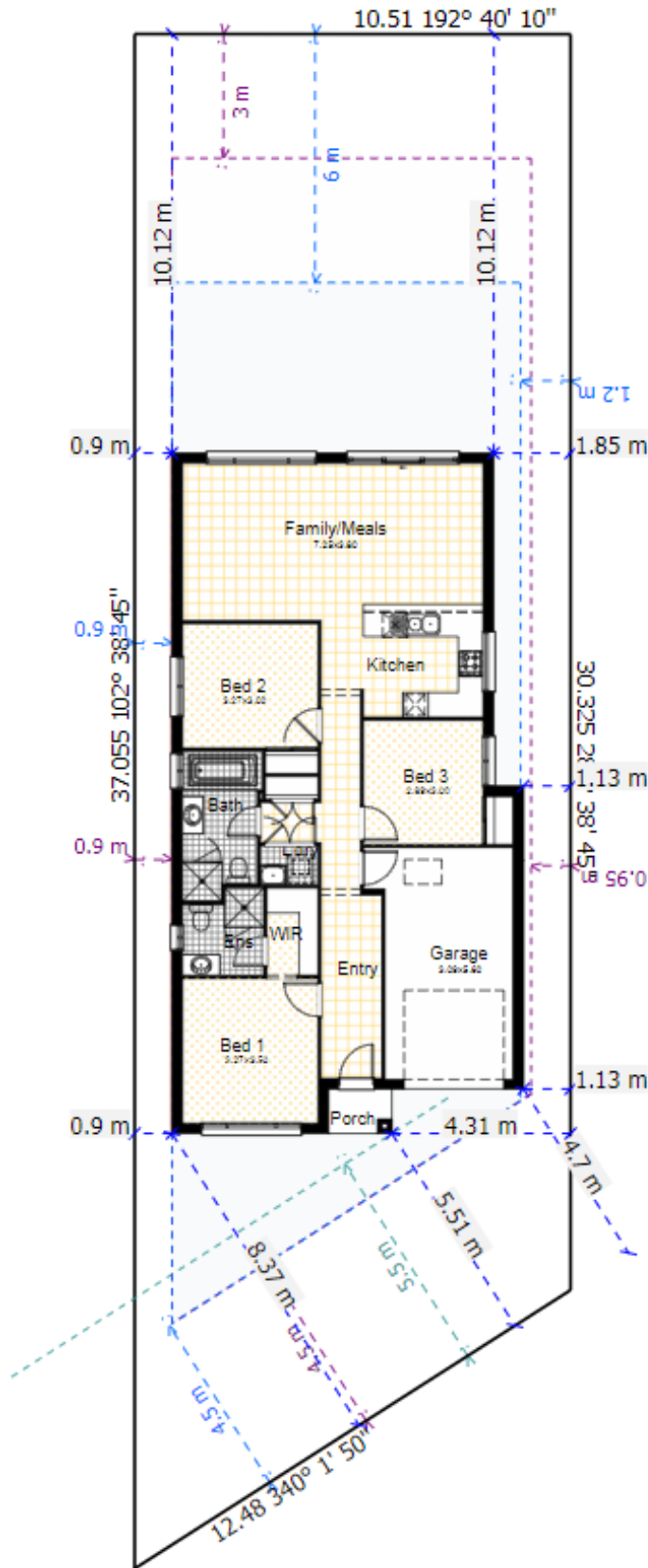
- Quality Tiles Carpet
- Blinds and Flyscreens to windows
- Insulation to walls and ceiling (excluding garage)
- 900mm Stainless Steel Oven, Cook top and Range hood. Stainless Steel Dishwasher
- 20mm stone bench top to kitchen with Soft close drawers and doors.
- Automatic Garage Doors
- Ducted Air Included
- Solar Bonus
- Driveway, Turf, Letterbox , Site Costs Fencing
- *Current promotional discount already applied



CPG ESTATES

Domaine homes

Terms and conditions apply contact us for more information. Images for illustrative purposes only. Land value included in the package. E&OE. Domaine Homes reserves the right to change the price without notice. Domaine Homes (NSW) Pty Ltd. ABN 19 080 788 969 BL No. 91387C. Prices based on July 2024 Price List.



Geneva 14 353m² Lot

| | | | |
|--------------|--------|---------------------------|-----|
| House Length | 16.43m | Total Area m ² | 129 |
| House Width | 8.47m | Total Area Squares | 14 |