



from **\$641,037**

BALMORAL 221

Kingston facade

Home size : 23.71 SQ

4 2 2 0 sqm

Lot 313 House & Land
Eucalee Boulevard Gleneagle.

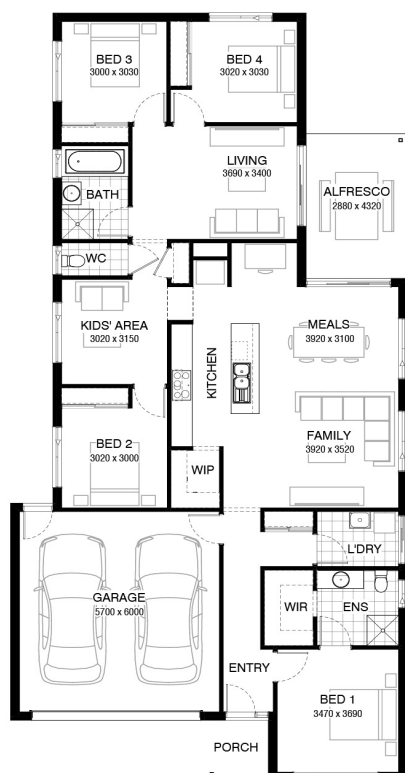
- 90mm timber frames on all Burbank homes
- Gooseneck tap - 20mm stone benchtops
- Overhead cupboards to the length of kitchen benchtop
- Daikin Ducted Air Conditioning - Carpet; Tiles & extra LED Downlights & PP Throughout
- Raised Ceiling height 2590mm single story - Block out Blinds - Flyscreens
- NBN Ready; Council Fees All Included + More
- Driveway + Letterbox + Colorbond Roof + Sarking + Tiling to Alfresco
- Upgraded facade and more inclusions!



Robert Wilson

0407 883 675

Robert.Wilson@burbank.com.au
www.burbank.com.au



*Images are for illustrative purposes only and may include upgrade items, fixtures, finishes available at an additional cost. Burbank does not supply items such as furniture, landscaping, fencing and external lighting. Any prices listed do not include the supply of these items. Packages are subject to availability and to the subject to developer's design review panel and council's final approval. Package price excludes stamp duty on land, legal fees and conveyancing costs. For detailed home pricing, please consult a Burbank sales consultant for further information. Burbank reserves the right to alter the images, descriptions, and/or pricing at any time without notice. All designs are the property of Burbank and must not be used, reproduced, copied or varied, wholly or in part without written permission from an authorised Burbank representative. Copyright. Burbank Australia (QLD) Pty Ltd. ABN 77 103 014 615. Builders Registration number QBCC 1046544. - Printed on: 21/02/2024

Burbank