



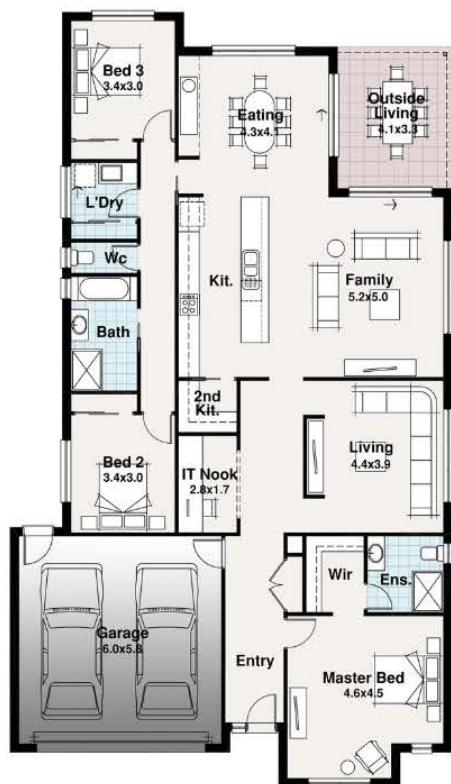
*Facade for illustrative purposes only

Starting from

\$710,033

House & Land Package

House **\$410,133** Land **\$299,900**



PACKAGE INCLUDES

- 3 bedrooms, 2 living areas
- All council building and water application fees
- fixed site costs
- Colorbond roof
- Rendered finish
- Carpet and tiles throughout
- Designer Kitchen
- Alfresco Area
- Mail box and clothes line
- Exposed aggregate driveway and paths

✓ CHOOSE YOUR OWN COLOURS

✓ DESIGN YOUR OWN KITCHEN*

✓ PERSONAL SERVICE

✓ DEAL DIRECT WITH YOUR BUILDER

* ALLOWANCE APPLIES WHEN DESIGNING KITCHEN



National Luxury Homes

For more information

PH:5500 3700

0476 321 297

sales@brettwardhomes.com.au

* National Luxury Homes (NLH) Fixed Price House & land Packages are only available for specific allotments mentioned on the Brochure or as Advertised. Land prices and availability are subject to change without notice and are not owned by NLH. Additional costs may occur if the bushfire attack level (BAL) exceeds 12.5 unless where stated. Unless stated in the document, these packages are not available in conjunction with any other promotion and are subject to Developer Approval. The determined house siting on the lot is at the discretion of NLH only. NLH reserves the right to withdraw any fixed-price House & Land package without notice. The package is correct at the time of publication. The promoter is National Luxury Homes. Pricing does not include additional legal fees relating to the building and/or land contract, and stamp duty charges refer to standard inclusions for full details. The First Home Owners Grant is subject to State Government approvals. The quoted price is subject to change without notice and is current at the time of publication only. The plan shown may require modification to comply with NCC liveability and energy efficiency standards.