

# Stylemaster Homes

\$634k-



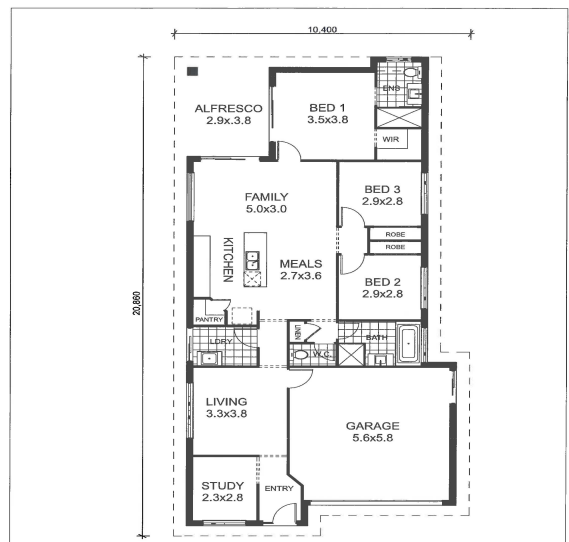
Lot 405, Eucalee Blvd Gleneagle

House size: 210m<sup>2</sup> / Block size: 476m<sup>2</sup>

**Courtview 18  
Porto Facade**

#### PREMIER INCLUSIONS:

- Steel Frame made from Truecore, C/bond roof 25
- Rendered Hebel exterior
- Feature Axon cladding
- Designer ceramic tiling throughout – main floors, wet areas and alfresco
- Carpet to bedrooms and media
- Daikin ducted a/c
- Raised ceilings 2590
- Quality 900mm wide European kitchen appliances, including bonus dishwasher
- 20mm stone benchtop to kitchen and bathrooms
- Quality bathroom tapware, basins and back to wall rimless wc
- Exposed aggregate driveway / porch 65m<sup>2</sup>
- Clothesline, letterbox, front and rear wintergreen turf, side gravel, generous siteworks, 'H' soil, piercing, N3 wind. Council fees



**Contact: Barry Thompson**  
0417 713 745  
[b.thompson@stylemasterhomes.com.au](mailto:b.thompson@stylemasterhomes.com.au)