

LOVE LIFE

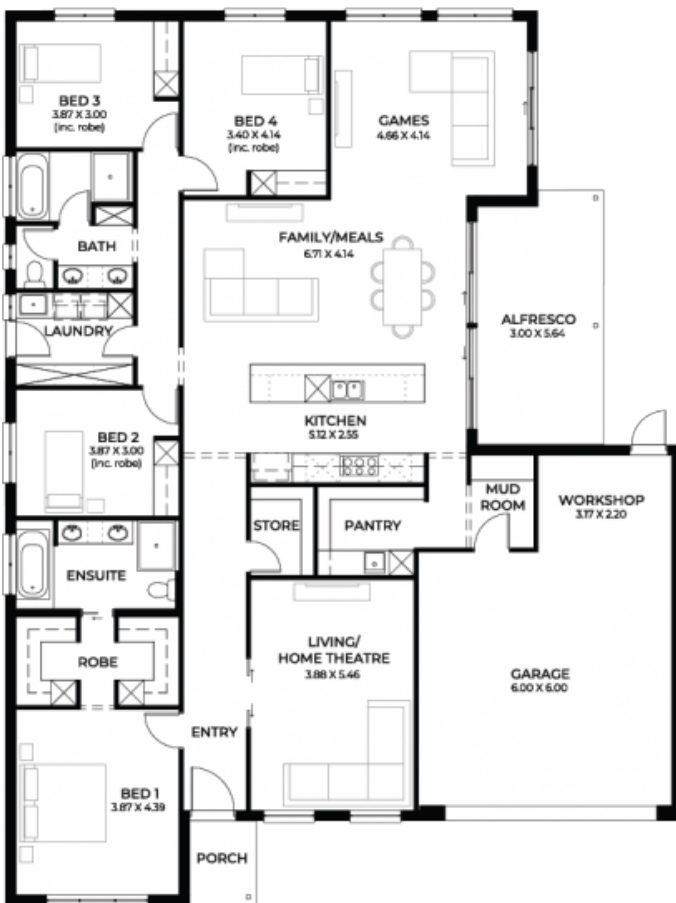
3 4 2 2



LOT 231, Ashbourne Drive,
Gawler Belt
'William Lakes'

DESIGN: **ELEVATE 3.5**
INCLUSIONS: **STYLE**
BLOCK SIZE: **510.00m²**
HOUSE SIZE: **292.54m²**

HOUSE & LAND
\$770,340*



INCLUSIONS:

- EXCLUSIVE RESERVE FACING HOUSE AND LAND PACKAGE.
- Introducing this exceptional house and land package designed to elevate your living experience:
- Introductory \$17k discount for limited time only
- Premium Facade Included
- High level of upgrades included
- Exclusive floorplan for comfort, functionality, and space
- Emphasis on natural light and logical room placement
- High ceilings and grand doors for a "wow factor"
- Entertainer Style kitchens with stone benchtops and 900mm appliances
- Soft close drawers and ample storage
- Outdoor living areas for relaxation and gatherings
- Choice of architecturally designed facades
- Energy-efficient design for utility cost savings and eco-friendliness
- Luxurious bathroom finishes with tiled ledges
- Upgrade options available
- Contact me to book a consultation, and together, we'll explore our full range of features and options.

Joanne Caruso

M: 0447 631 130

E: joanec@hickinbotham.com.au

hickinbotham.com.au

*Conditions apply. Certain elevations may not match the particular floor plan published in this package and, as such, all floor plans and elevations are for illustration purposes only. Land subject to availability. The land referred to in this promotion is not owned by us. We make no representation and, to the extent permissible at law, we disclaim all liability, as to the suitability of the land to build on, or the suitability of any house design, or otherwise. You must satisfy yourself of that by inspection, or by taking professional advice, or otherwise. Pricing is indicative only and based on standard costings. Price may vary depending on selections, engineering, council and utility requirements and adjustments to allowances. All packages subject to final council approval. Alan Hickinbotham Pty Ltd ABN 13 007 567 222, RLA 230557. Construction Services Australia Pty Ltd ABN 99 007 641 787, Building Licence G8969.