



from **\$829,600**

RICHARDSON 319

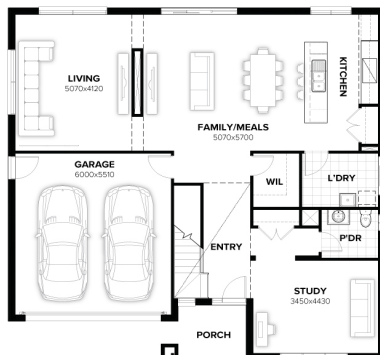
Yorke facade

Home size : 34.25 SQ

4 3 2 510 sqm

Lot 231 William Lakes, Gawler Belt (William Lakes)

- H&L Package
- Design options available
- Premium Upgrades + Reverse Cycle Air + 2.7 High Ceilings + Dekton Benchtops
- 12 Month Price Freeze
- Guaranteed Build Times
- Fixed Price Contracts & 30 Year Structural Guarantee



Anthony Costi



Anthony.Costi@burbank.com.au
www.burbank.com.au

*Images are for illustrative purposes only and may include upgrade items, fixtures, finishes available at an additional cost. Burbank does not supply items such as furniture, landscaping, fencing and external lighting. Any prices listed do not include the supply of these items. Packages are subject to availability and to the subject to developer's design review panel and council's final approval. Package price excludes stamp duty on land, legal fees and conveyancing costs. For detailed home pricing, please consult a Burbank sales consultant for further information. Burbank reserves the right to alter the images, descriptions, and/or pricing at any time without notice. All designs are the property of Burbank and must not be used, reproduced, copied or varied, wholly or in part without written permission from an authorised Burbank representative. Copyright. Burbank Australia (SA) Pty Ltd. ABN 96 165 533 406 099 872. Builders Registration number BLD 266709. - Printed on: 24/05/2024