



## FIXED PRICE HOME AND LAND

Images shown are for illustrative purposes only and may not represent the final product such as lighting, window furnishings, timber look garage door & timber windows. Façade details including entry door and window sizing may vary between house types. Pricing also excludes features such as fencing, landscaping, letter box, decking, driveway and any notable features of the façade. Please speak with your sales consultant for further details.

LOT 4267, Jubilee Estate, WYNDHAM VALE (331.25M2)

FLOOR PLAN: Tarragon 16\_150  
FACADE: Maize

# \$569,675

3 2 2 1 16sq

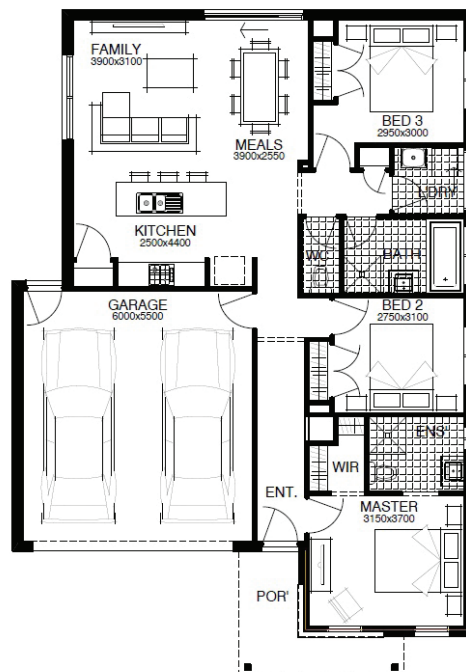
FIRST HOME OWNERS PRICE \$559,675

**WELLNESS LIVES HERE**  
*You should too.*

\*Terms & conditions apply, visit [www.simonds.com.au/terms-and-conditions](http://www.simonds.com.au/terms-and-conditions)

### PACKAGE INCLUSIONS:

- ▶ LIFETIME STRUCTURAL GUARANTEE
- ▶ DEVELOPER & COUNCIL REQS
- ▶ 450MM EAVES TO FACADE
- ▶ KEYED WINDOW LOCKS TO ALL OPENABLE WINDOWS
- ▶ 3 COAT PAINT APPLICATION
- ▶ SECTIONAL LIFT GARAGE DOOR
- ▶ TILED SHOWER BASE
- ▶ FINANCE SOLUTIONS AVAILABLE
- ▶ ... AND MUCH MORE!



For enquiries please contact:  
Viola Vito  
0423518385  
[simondsxpress.com.au](http://simondsxpress.com.au)

VIC  
Metro West  
[viola.vito@simonds.com.au](mailto:viola.vito@simonds.com.au)

**Jubilee**