

Estate: Jubilee  
Lot: 5705 Grappa Circuit, Wyndham Vale

# Fairhaven



from  
**\$620,574**



## Vogue 187

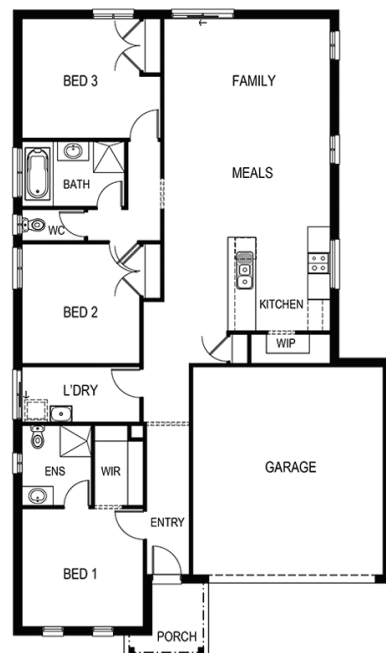
Block: 12.5mW x 27.02mL House: 10.9mW x 18.65mL



**Block Size: 339m<sup>2</sup>**  
**Title Exp: March 2025**  
**House Size: 18.79sq**

### Package Includes:

- 2590mm Ceilings to ground floor
- Tiles or laminate timber flooring to Entry, Kitchen, Family and Meals. Carpet to the remaining areas
- 20mm reconstituted stone to Kitchen
- Stainless steel gas cooktop
- Choice of facades
- COLORBOND® roof
- Remote control to garage
- Gas ducted heating
- Choice of internal and external colour schemes
- Solar panel hot water system
- Up to a H1 slab design
- Fixed site costs
- Developers guidelines



**M 1800 324 742**

**E [jsankari@fairhavenhomes.com.au](mailto:jsankari@fairhavenhomes.com.au)**

**[fairhavenhomes.com.au/house-and-land/](https://fairhavenhomes.com.au/house-and-land/)**



Images are for illustration purposes only, driveway, landscaping, external lighting, furniture, window furnishings, & porch deck are not included. All pricing is based on our standard inclusions and site start within 6 months for Elegance & 12 months for Simplicity and Bridgewater from the initial deposit date. Siting of the House is at the discretion of the Builder. The Builders reserves the right to withdraw or amend prices, inclusions, & special offers without notice. House & Land sold separately, & pricing may vary due to land availability. Price does not include: not limited to: transfer duty, stamp duty, settlement costs or any other fees associated with the land settlement. It is the Purchasers responsibility to make independent enquiries into restrictions on the property in relation to MCPs, Developer Guidelines, Covenants, Building Envelopes, POS & Estate Eng. and to confirm land prices & availability before purchasing land. Fairhaven Homes acts as Builder for the sale of the Building only. \*House & Land packages excludes block specific corner treatment & acoustics requirements where applicable & are subject to Developers design panel for final approval & may need to be mirrored or altered to comply. The Purchaser may be required to upgrade façade should a similar façade be built/submitted within proximity & additional cost may apply. For full details please contact one of our New Home Consultants. Fairhaven Homes Pty Ltd. CDB-U 48497. T&C's apply. <https://www.fairhavenhomes.com.au/promotion-terms-and-conditions/> for full T&Cs.