




ARMADALE 253

\$686,964

**Lot 5624 Jubilee Estate
Wyndham Vale**

4  2  2 

The Armadale 253. (\$666,964 after Developer's Rebate)

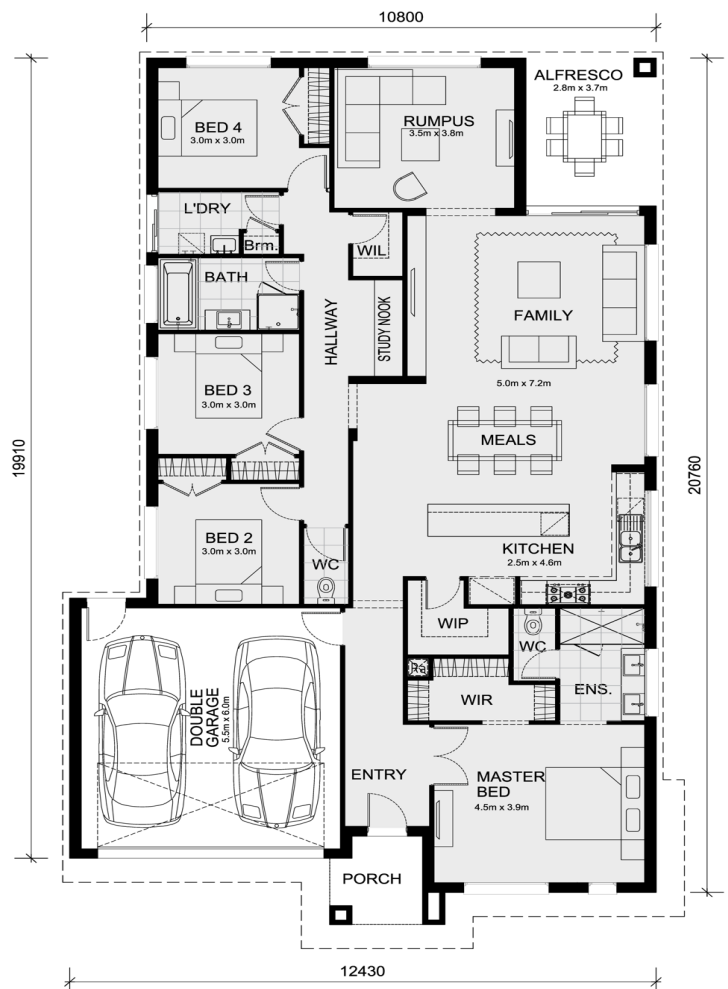
The heart of this home is the large L-shape kitchen and dedicated Island Bench, which provides ample bench space and storage, making meal preparation and cooking a breeze.

Price includes:

- Coloured Driveway
- Floor Coverings
- 2590mm Ceilings
- 40mm stone benchtop to Kitchen
- 20mm stone to bathrooms
- Evaporative Cooling
- Tiled shower bases
- 900 mm upright cooker and 900mm rangehood
- Microwave with Trim kit
- Dishwasher
- and more!

The Armadale 253 is an outstanding example of modern living, with a focus on both style and functionality.

CALL MAX on 0422 926 349



Area Details

Land Size 392sqm Building Size 233sqm

Contact: Max Gutierrez
max@mimosahomes.com.au

0422 926 349
www.mimosahomes.com.au

Disclaimer: Land availability and pricing is subject to the development availability. Mimosa Homes reserves the right to amend specifications and price without notice. All plans and facades are indicative concepts only, and are not intended to be accurate depictions of the building, fencing, paths, driveways or landscaping and are not necessarily to scale all dimensions are

approximate (refer to working drawings). Package prices are based on standard facades and standard inclusions.