




## V BOLINDA 187

**\$603,230**

**Lot 4267 Sensra Jubilee Estate  
Wyndham Vale**

**4**  **2**  **2** 

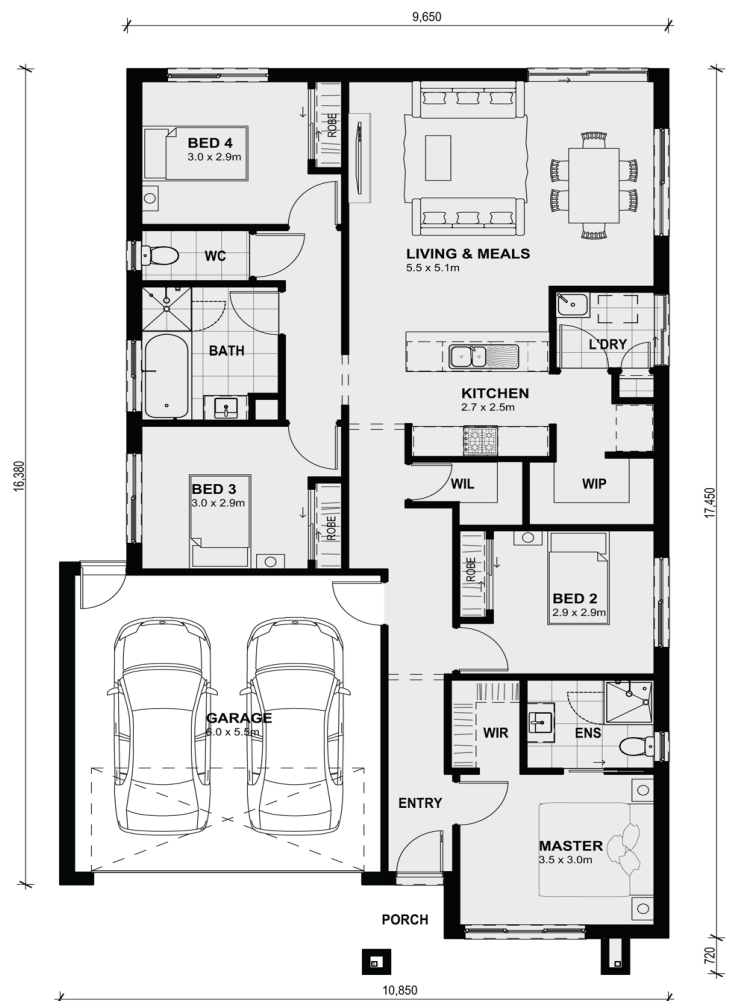
### A clever design: the Bolinda 187

This functional modern home is practical and large enough for a growing family. With four bedrooms, three with built in robes and the master bedroom with a walk-in wardrobe and ensuite, a walk-in linen and large walk-in pantry, the Bolinda 187 is the perfect home.

Price Includes:

- 7 Star Energy Rating
- 3.5KW Solar PV System
- Fixed Site Costs
- Double Glazed Windows Throughout
- Recycled Water
- Coloured Concrete Driveway
- Floor Coverings
- 20mm VCS Benchtops to kitchen
- Split A/C
- Landscaping to Front & Back
- Roller Blinds
- Fold down clothesline
- Letterbox
- Flyscreens
- Remote control garage door

Call now to secure this package!



#### Area Details

Land Size 327sqm Building Size 175sqm

**Contact: Max Gutierrez**  
max@mimosahomes.com.au

**0422 926 349**  
www.mimosahomes.com.au