

## Palm

4  2  2  374 m<sup>2</sup> 

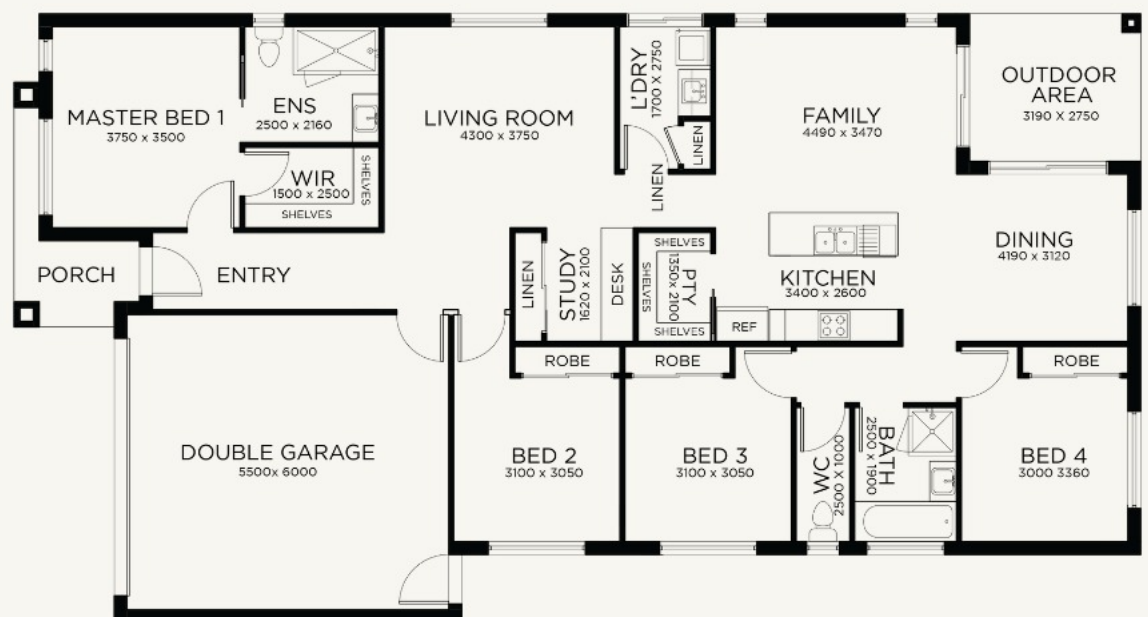


### Lot 315 Specifications

- Lot Width: 12.5m
- Lot Length: 28m
- Lot Size: 350m<sup>2</sup>

### Home Inclusions (CBC)

- H Class Slab
- Stone Bench to Kitchen, Ensuite and Bathroom
- 900mm Appliance to kitchen
- Led Downlights throughout
- Panel Lift door to Garage
- Tiled Showers to Ensuite and Bathroom
- Carpets and Floor coverings
- 3 Options of Facades
- Developer Design Guidelines



### CONTACT OUR TEAM

John Perrone  
0476 981 713  
1300 013 013  
johnperrone@harwoodconstructiongroup.com.au

Suite 53/ Level 4, 80 Market Street  
South Melbourne, Victoria, 3205

[www.harwoodgroup.au](http://www.harwoodgroup.au)

  @harwoodgroup