



# V BAYNTON 143

# \$549,454

**Lot 5437 Superb Jubilee Estate  
Wyndham Vale**

**3**  **2**  **1** 

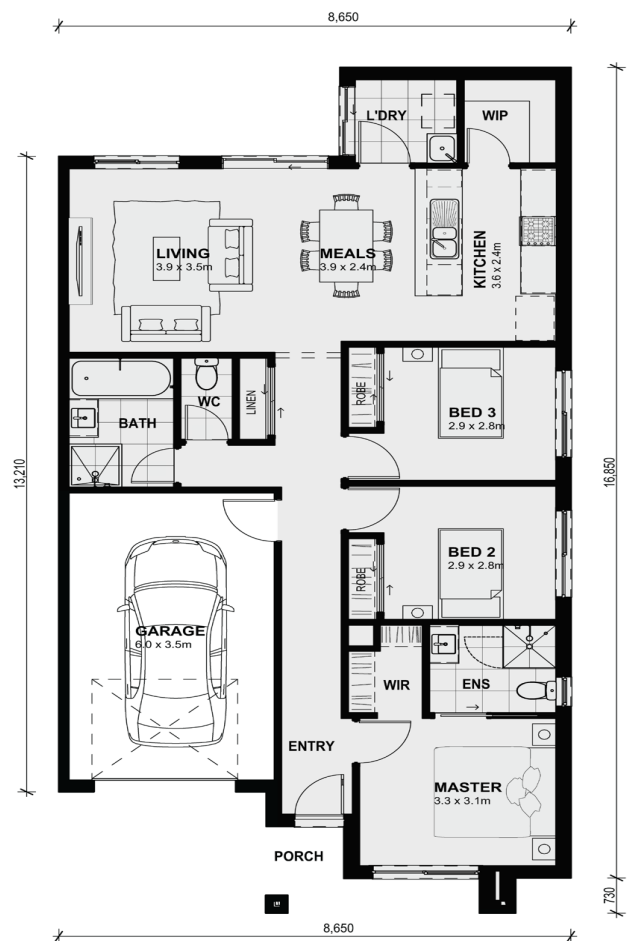
## The Baynton 143

Boasting a large master bedroom with walk-in wardrobe and ensuite located at the front of the home, internal access from the garage, two spacious bedrooms, separate w.c and an open kitchen, meals and living area, finishes off this simple, yet practical design.

Price Includes:

- 7 Star Energy Rating
- 3.5KW Solar PV System
- Fixed Site Costs
- Double Glazed Windows Throughout
- Single Glazing to All Doors throughout
- Recycled Water
- Coloured Concrete Driveway
- Floor Coverings
- 20mm VCS Benchtops to kitchen
- Split A/C
- Landscaping to Front & Back
- Roller Blinds
- Fold down clothesline
- Letterbox
- Flyscreens
- Remote control garage door

Call now to secure this package!



### Area Details

Land Size 262sqm Building Size 133sqm

Contact: Max Gutierrez  
max@mimosahomes.com.au

0422 926 349  
www.mimosahomes.com.au